

Children's Partnership

January 2010, Issue 4

Newsletter

Epping Forest Children's Partnership (EFCP)

Epping Forest Children's Partnership brings together all key local organisations that provide children's services and encourages them to work together.

The partnership is part of 'One Epping Forest' - the Local Strategic Partnership, and is chaired by Julie Chandler of the District Council.

The key purpose of EFCP is to identify the varied needs of Epping Forest's children, young people and their families and to address these needs through improving coordination and developing services.

The Partnership represents Epping Forest's children, young people and families at the West Essex Children's Trust Board, which is the new area partnership body for service planning and commissioning.

EFCP aims to ensure that the unique needs and often hidden issues of deprivation and disadvantage in the Epping Forest District are recognised and addressed.

As part of the 'Every Child Matters' agenda and in line with the Essex Children and Young People's Plan, the partnership aims to improve the lives of children and young people in the Epping Forest District through prioritising need and directing interventions and activities accordingly.

Refreshed Essex Children and Young People's Plan 2009-11 Now Available

The Essex Children and Young People's Plan 2009-11 (CYPP) has now been published.

It has been produced following extensive consultation with our partners, children and young people. The vision is for all children and young people in Essex to be valued, inspired, loved, nurtured and encouraged, with opportunities to achieve their immediate and long term ambitions. Our role is to improve the life chances of all, and to provide extra support for those who need it

The Plan has been developed and agreed by the Children's Trust which is a partnership bringing together the key organisations responsible for services for children, young people and families across Essex in a shared commitment to improve children's lives. Partner organisations include health, police, probation, youth offending teams, education, Essex County Council, the voluntary sector and district councils.

It sets out 10 priorities linked to the Every Child Matters outcomes for Essex:

Be Healthy - 1 By tackling health inequalities and helping all children and young people make informed healthy lifestyle choices, with access to the services they need. **2** By improving Child and Adolescent Mental Health Services. **3** By providing effective support for parents and carers.

Stay Safe - 4 By strengthening the services and processes that keep children and young people safe from neglect and abuse. **5** By ensuring all children and young people and their families feel safe and secure where they are cared for, play, live and go to work. **6** By strengthening corporate parenting.

Enjoy and Achieve - 7 By enabling all children and young people to aspire, learn, achieve highly and realise their potential.

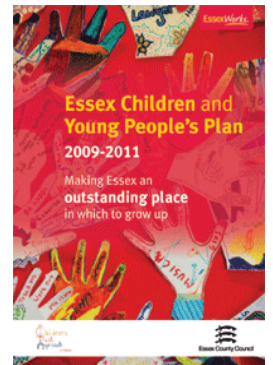
Make a positive contribution - 8 By providing all children and young people with opportunities for a fulfilling and enjoyable childhood. We will aim for a sustainable legacy by maximising the potential of the 2012 Olympic and Paralympic Games.

Achieve economic well-being - 9 By reducing the impact of poverty and the recession on the lives of all children and young people and their families.

Narrow the Gap - 10 By improving the life chances of Looked After children, young carers and all other children and families at risk of poor outcomes.

From a practical point of view, the Plan means closer joined up working between partners to provide services focused on the specific needs of children and young people – and to Think Family.

You can [read and download](#) the Plan by going to the following web address: <http://www.essexcc.gov.uk/vip8/ecc/ECCWebsite/dis/guc.jsp?channelOid=14181&guideOid=60900&guideContentOid=75958> where further information about the Children's Trust in Essex is also available.

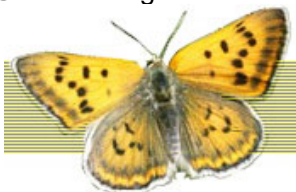


In the Spotlight. An opportunity for local providers to share information about themselves.

ADAS

ADAS was one of the first substance misuse services in the UK to provide a specialist service for children affected by parental substance misuse. ADAS employs a designated Children's Support Therapist who provides play and creative therapy for children aged between 3 and 18 yrs. Older children can also access the counselling and complementary therapy services if they prefer not to use play or creative therapy. Play therapy provides a space for children to be able to explore difficult experiences through play. Children can work through and make sense of their experiences by using a sand tray, paints, clay, a doll's house, building materials, slime, puppets or other specialist play equipment.

Philomena Lawrence
01279 641347/438716
07773777882
phil@adasuk.org



Performance Reward Grant and Local Priority Funding.

The following organisations were commissioned with funding to support Epping Forest children's and young people's priorities up to March 2011:

National Education Trust - Training for LSAs in primary schools on managing emotions among children aged 6-7

EF District Council - Special educational needs trampolining to improve health and general well being.

Relate - Support for parents of teenagers at risk of entering the youth justice system.

Davenant School - Inclusion programme aims to encourage all young people to realise their potential in across a range of skills.

West Essex PCT - Parenting for parents with an under 5

Bridge, Buckhurst Hill - Increased Involvement and Participation in the Community, increased Life skills

The Box - Open access youth work after school.

Loughton Youth Project - Detached youth worker outreach project

E F District Council - "We don't do bored" positive activities giving young people an opportunity to take part in physical and social activity.

Royal Assoc for Deaf - Extending Opportunities, Increases the number of accessible mainstream projects for deaf children and young people.

Catch 22 - Essex Young Peoples Support service provides a range of community based therapeutic and group support

Accuro - Parenting Support Project, To provide support to parents/carers of children/young people with a disability

East Potential - Fathers and Male Carers project

Autism Anglia - Family Support Services

Young Concern - Dersire2Aspire, Support young people to make positive lifestyle choices.

Epping Forest Sports Partnership - Opportunities for Young Disabled people to access sport. (Sport-ability)

Theatre Resource - 'Make It', aimed at 9-25's who have disabilities

Lambourne Outdoor Centre - activities designed to build young people's confidence and self-esteem.

Ignite - Facilitate activities in young people's centre (Loughton)

ADAS - Support for children and young people affected by drug or alcohol related domestic violence.

Loughton Youth Theatre - Provides opportunities for children and young people to "question, explore and ultimately shine through the performing arts"

For further details of and how to access these services please contact perryn.jasper@essex.gov.uk, **Mobile: 07827 976949** or **contact the organisations directly.**

Free Telephone Support for Parents



Practitioners working with parents can now refer parents or carers for Parentline Plus' Extended Telephone Support (ETS) service. This is six sessions of intensive, individual support for any parent or carer.

A recent evaluation said 95% of parents would recommend ETS to other families.

Calls are free, confidential and can be about any parenting issue – from children's sleeping problems and family rows through to violent behaviour, alcohol, drugs and gangs. Parents are encouraged to think through and try out ways to improve their situation with the worker's support.

TASCC teams in Maldon and Tendring have been piloting ETS and it is now being rolled out to employees in children's centres and extended schools coordinators. Employees have found the referral process very simple and described the service as "invaluable for those parents wanting a bit of extra help and emotional encouragement, to support their child/young person through a tricky patch".

Making a referral is easy – you just fill out a simple, [online referral form](#) and Parentline Plus does the rest. They contact the parent and arrange convenient times for the ETS worker to call.

Any questions? Email ets@parentlineplus.org.uk or phone 0207 284 5513.